

SINGLE LID CASES

CATALOGUE

OCTOBER 2022



SINCE 1976





TABLE + OF CONTENTS

FEATURES SINGLE LID CONTAINERS	3
LIGHT LIFT™ CONTAINERS MEASUREMENT GUIDE	4
SINGLE LID SPECIFICATIONS	5-13
OPTIONS	14
ACCESSORIES	15

PELI-HARDIGG™ SINGLE LID CONTAINERS

THE WIDEST SELECTION OF CASES IN THE WORLD

Rugged, uncompromising and trusted, Peli cases protect what matters to you, from the everyday to the extraordinary.

Peli-Hardigg™ rotomoulded Single Lid Containers are one-piece constructions, moulded from lightweight, high-impact polyethylene. With 20% more protective material in the edges and corners, where it is needed most, these heavy-duty containers ensure that valuable equipment is protected from impacts and the elements. Proven for over 60 years in the most demanding environments. Engineered and manufactured in the U.S. and the U.K.

Available in +500 sizes, Peli-Hardigg Single Lid Containers are completely customisable with a wide range of bolt-on options like document holders, casters, humidity indicators and many more.



FEATURES SINGLE LID CONTAINERS

+ HIGHER IMPACT RESISTANCE

A Peli-Hardigg Single Lid Case begins as resin powder that is measured and loaded into a mould attached to a biaxial arm. As the mould rotates, it is heated and 15%-20% more resin accumulates in the corners and edges. When the case is dropped (and it will be) it has extra strength where it is needed.



+ RECESSED HARDWARE, COLUMNAR RIBS

Recessed handles, latches and hinges prevents them from being sheared off during transport. Ribs are moulded in to create incredibly strong forms from lightweight material. Cases of like sizes have matching top and bottom ribs, so they won't shift when stacked.

+ ANTI SHEAR LOCKS

Moulded, interlocking blocks are matched around the rim of the case. When the case takes an impact, the lid stays aligned to the base.

+ WATERTIGHT TONGUE AND GROOVE SEAL

Keep your gear dry and dust-free in the harshest environments.

+ BELLS AND WHISTLES

With accessories and custom services from our Advanced Case Centers, a Peli-Hardigg Case can be a lot more than a box. Next we'll share some important options.

SINGLE LID CASE FEATURES

- A MOULDED-IN STACKING RIBS**
Secure Non-Slip Stacking on Matched Size Cases
- B COMFORT GRIP HANDLES**
A Peli-Hardigg Patented Feature, Heavy-Duty, Spring Loaded to Lay Flat
- C PATENTED MOULDED-IN METAL INSERTS**
Catch and Hinge Attachment Points, Designed to Distribute Load to Case Walls
- D RECESSED HARDWARE**
Hardware Protected from Impact
Snag Free Transport
- E DOUBLE WALLED RIM FOR TONGUE-IN-GROOVE SEAL**
Remains Sealed After Impact
Splash and Rain Resistant
Air and Watertight Options
- F POSITIVE ANTI-SHEAR LOCKS**
Prevent Lid Separation Upon Impact
Minimise Hardware Stress
- G REINFORCED CORNERS AND EDGES**
15% to 20% Thicker Corners and Edges for Added Impact Protection




PELI-HARDIGG™ LIGHT LIFT™ CASES

Peli-Hardigg™ Light Lift™ containers combine agility and durability. At 30%* lighter than our traditional heavy-duty roto moulded cases, the Peli-Hardigg™ Light Lift™ series allows for faster deployment and reduced shipping costs, without compromising protection.

The new Light Lift case family is geared toward two - or four - man carry operations with a maximum 136 kgs. gross payload.

Peli-Hardigg™ Light Lift™ series: Every gram counts.

 Search for this icon in the tables to find the Light Lift™ case models

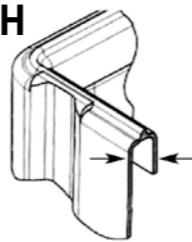


SINGLE LID CASE MEASUREMENT GUIDE



+ PARTING-LINE WIDTH

- AL = 1.5" (33mm)
- BL = 2.0" (54mm)
- CL = 1.0" (25mm)
- DL = 1.75" (44mm)



AL2216-0803FT/AC/HL/DE/W

(interior sizes in inches)

Dimensions are nominal.
Weights approximate.

- FT: fork truckable
- AC: all catch
- HL: handle on lid
- DE: stacking ribs match Classic Racks
- W: Moulded-in edge casters



Use of Military image does not imply or constitute Department of Defense endorsement

CAT. NO.	APPROXIMATE INSIDE DIMENSIONS										APPROXIMATE OUTSIDE DIMENSIONS						WEIGHT	
	L		W		H		BASE		LID		L		W		H		lbs	kg
	in	mm	in	mm	in	mm	in	mm	in	mm	in	mm	in	mm	in	mm		
AL1010-0904	9.9	252	10.0	254	12.7	323	8.7	221	4.0	102	12.9	328	13.0	330	14.4	366	9.8	4.4
AL1010-0905	9.9	252	10.0	254	14.0	354	8.7	221	5.3	133	12.9	328	13.0	330	15.6	397	10.0	4.5
AL1010-1404	9.9	252	10.0	254	17.8	451	13.8	349	4.0	102	12.9	328	13.0	330	19.4	494	12.2	5.5
AL1010-1405	9.9	252	10.0	254	19.0	483	13.8	349	5.3	133	12.9	328	13.0	330	20.7	526	12.4	5.6
CL1109-0303HL	11.0	279	8.9	225	6.0	152	3.0	76	3.0	76	13.1	333	10.9	276	8.2	208	5.4	2.4
AL1212-0404	12.0	305	12.0	305	8.2	209	4.2	107	4.0	102	15.0	381	15.0	381	9.9	251	10.6	4.8
AL1212-0405	12.0	305	12.0	305	9.3	237	4.2	107	5.1	130	15.0	381	15.0	381	11.0	280	10.8	4.9
AL1212-0604	12.0	305	12.0	305	10.3	262	6.3	160	4.0	102	15.0	381	15.0	381	12.0	305	11.0	5.0
AL1212-0605	12.0	305	12.0	305	11.4	290	6.3	160	5.1	130	15.0	381	15.0	381	13.0	330	11.2	5.1
AL1212-1204	12.0	305	12.0	305	15.3	388	11.3	286	4.0	102	15.0	381	15.0	381	17.0	431	12.8	5.8
AL1212-1205	12.0	305	12.0	305	16.4	416	11.3	286	5.1	130	15.0	381	15.0	381	18.1	459	13.1	5.9
AL1212-1504	12.0	305	12.0	305	19.2	487	15.2	386	4.0	102	15.0	381	15.0	381	20.9	530	14.7	6.7
AL1212-1505	12.0	305	12.0	305	20.3	516	15.2	386	5.1	130	15.0	381	15.0	381	22.0	559	14.9	6.8
AL1212-1904	12.0	305	12.0	305	22.7	577	18.7	475	4.0	102	15.0	381	15.0	381	24.4	620	16.8	7.6
AL1212-1905	12.0	305	12.0	305	23.8	605	18.7	475	5.1	130	15.0	381	15.0	381	25.5	648	17.0	7.7
CL1412-0502	14.8	375	11.9	301	7.4	189	4.9	125	2.5	64	16.9	428	13.9	352	8.4	214	9.4	4.3
AL1413-0505	14.5	368	13.1	333	10.3	262	5.1	129	5.2	133	17.5	445	16.1	409	12.0	305	13.5	6.1
AL1413-1005	14.5	368	13.1	333	15.4	392	10.2	259	5.2	133	17.5	445	16.1	409	17.1	435	16.5	7.5
AL1413-2105	14.5	368	13.1	333	26.0	660	20.8	527	5.2	133	17.5	445	16.1	409	27.7	703	19.7	8.9
AL1414-0705	14.0	356	14.1	359	11.9	303	6.8	171	5.2	132	17.0	432	17.1	435	13.6	346	14.5	6.6
AL1616-0404	15.8	400	15.9	403	7.7	197	3.9	98	3.9	98	18.8	476	18.9	480	9.4	240	12.6	5.7
AL1616-0405	15.8	400	15.9	403	9.0	228	3.9	98	5.1	130	18.8	476	18.9	480	10.7	272	13.7	6.2
AL1616-0412AC/HL	15.8	400	15.9	403	16.1	408	3.9	98	12.2	309	18.8	476	18.9	480	17.7	449	17.9	8.1
AL1616-0504	15.8	400	15.9	403	9.3	236	5.4	138	3.9	98	18.8	476	18.9	480	11.0	279	13.9	6.3
AL1616-0505	15.8	400	15.9	403	10.5	268	5.4	138	5.1	130	18.8	476	18.9	480	12.2	310	14.5	6.6
AL1616-0512AC/HL	15.8	400	15.9	403	17.6	447	5.4	138	12.2	309	18.8	476	18.9	480	19.2	487	18.5	8.4
AL1616-1004	15.8	400	15.9	403	13.7	349	9.9	251	3.9	98	18.8	476	18.9	480	15.4	392	17.2	7.8
AL1616-1005	15.8	400	15.9	403	15.0	381	9.9	251	5.1	130	18.8	476	18.9	480	16.7	424	17.6	8.0
AL1616-1012AC/HL	15.8	400	15.9	403	22.1	560	9.9	251	12.2	309	18.8	476	18.9	480	23.7	602	22.4	10.2
AL1616-1204	15.8	400	15.9	403	15.2	386	11.3	288	3.9	98	18.8	476	18.9	480	16.9	429	17.9	8.1
AL1616-1205	15.8	400	15.9	403	16.5	418	11.3	288	5.1	130	18.8	476	18.9	480	18.1	461	18.6	8.4
AL1616-1212AC/HL	15.8	400	15.9	403	23.5	597	11.3	288	12.2	309	18.8	476	18.9	480	25.2	640	23.2	10.5
AL1616-1804	15.8	400	15.9	403	22.1	562	18.3	464	3.9	98	18.8	476	18.9	480	23.8	605	21.7	9.8
AL1616-1805	15.8	400	15.9	403	23.4	594	18.3	464	5.1	130	18.8	476	18.9	480	25.1	637	22.0	10.0
AL1616-1812AC/HL	15.8	400	15.9	403	30.4	773	18.3	464	12.2	309	18.8	476	18.9	480	32.1	816	26.9	12.2
CL1713-0403	16.9	429	12.9	327	7.4	187	4.4	111	3.0	76	19.0	483	14.9	378	9.1	230	6.8	3.1
CL1713-0408AC/HL	16.9	429	12.9	327	12.0	305	4.4	111	7.6	194	19.0	483	14.9	378	13.7	348	11.0	5.0
CL1715-0904	17.1	435	14.9	378	14.0	356	9.9	251	4.2	105	19.3	489	16.9	428	15.7	399	12.6	5.7
AL1717-0909AC/HL	17.0	432	17.0	432	17.9	454	8.9	225	9.0	229	20.0	508	20.0	508	19.6	497	18.8	8.5

AC = All Catch | HL = Handle On Lid

Internal and external dimensions mentioned in the table are approximate and subject to general tolerances. These dimensions are given as a guidance to determine the right container.

OPTIONS

+ HARD PROTECTION SYSTEMS

When foam is not appropriate, Peli specialises in custom metal work. Cradles or frames hold sensitive parts away from the walls of the case. The area between the frame and the case is the "sway space", and dampeners are used to isolate the part from shock and vibration. Dampeners can be mounted foam bumpers, or elastomeric shock mounts that can mitigate impacts up to 15 G forces.

Extreme case work:
Engineered cradles
for secure transport.



+ SELECTING THE CASE HARDWARE- IT'S ALL ABOUT YOU

Getting your equipment safely from point A to point B is paramount. To move your case around you might need wheels, or if the load is extreme we can install forklift spacers and a bash-plate. We can also help you with technical choices, such as standard or mil-spec purge valves (prevents vacuum lock in the event of altitude change). The list goes on: from handles and latches to desiccant chambers for removing humidity from the case.



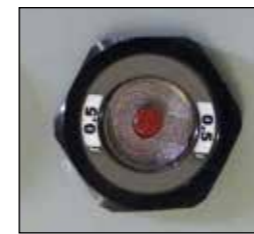
+ TESTING... 1-2-3

The time to find out if your equipment is going to arrive intact is before it ships. That's why we have a full service test lab to verify survivability. As a matter of fact, Peli operates one of the few certified test labs in the country.

Drop tests, immersion, temperature extremes, G-force and vibration: we do it all to prove our cases perform to your specifications.



ACCESSORIES



Pressure Relief Valve (PRV)



Extra Plastic Handles



Carbon Steel or Stainless Steel Metal Handles



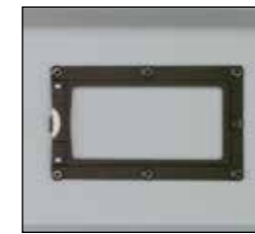
Bottom and Side Casters



Edge Casters



T-Handle and Bumper Kit



Card Holder



FlangeMount™ Cases



Forklift Bash Plates



Forklift Provision, Skid Runners



Front Labels



Hardware Stainless Steel Passivated Finish



Black Carbon Steel or Black Stainless Steel Hardware



Hinged Lid with Cable Stay



Lockable Cable Catch



Lockable Padlock Hasp



Custom Stenciling



Humidity Indicator
Indicates 20%, 30%, and 40% relative humidity ranges



ID Plate



Standard Labels



Lifting Rings/
Tie Down Rings



Airtight Certified

+ STANDARD COLOURS

SINGLE LID CASES

Gray – 133 Fed Std# 26270	Tan – 250 Fed Std# 20372	Blue – 135(lt) Pantone# 292U	White – 132 Fed Std# 27925	Yellow – 136 Pantone# 012U	Green – 138 (forest) Fed Std# 24052	Orange – 134 Fed Std# 12197
Yellow – 131 Fed Std# 23538	Maroon – 197 Pantone# 202U	Blue – 101(dk) Fed Std# 25052	Black – 032 Fed Std# 27040	Red – 130 Fed Std# 21105	Olive Drab – 137 Fed Std# 34096	Purple – 129 Pantone# 245U

Some options are not available on all case sizes and availability is subject to change at manufacturer's discretion.

LIGHT LIFT CASES

Gray – 572 Fed Std# 26270	Tan – 587 Fed Std# 20372	White – 586 Fed Std# 27925	Yellow – 588 Fed Std# 23538	Blue – 585 (dk) Fed Std# 25052	Black – 583 Fed Std# 27040	Olive Drab – 584 Fed Std# 34096
------------------------------	-----------------------------	-------------------------------	--------------------------------	-----------------------------------	-------------------------------	------------------------------------

Case colours may differ slightly from printed version.

LEARN MORE ABOUT + OUR PRODUCTS



www.peli.com



AVAILABLE IN 18 LANGUAGES!

www.pelicatalogue.com



www.peli.com/webinars



EMEA / www.peli.com

EUROPE, MIDDLE EAST & AFRICA HEADQUARTERS
PELI PRODUCTS, S.L.U.
 C/ Provença, 388 Planta 7
 08025 • Barcelona, Spain
 Tel +34 934 674 999

FRANCE
PELI PRODUCTS FRANCE S.A.S.
 20/22 Rue des Petits Hôtels
 75010 Paris, France
 Tel +33 (0)1 44 83 95 63

UK
PELI HARDIGG UK
 Unit 4, Brookfield Industrial Estate
 Leacon Road
 Ashford Kent TN23 4TU
 Tel + 44 (0) 1233 895 895

GERMANY
PELI PRODUCTS GERMANY GmbH
 Neudorfer Strasse 285 C
 09474 Crottendorf
 Germany
 Tel +49 (0) 211 882 42 401

DENMARK
PELI PRODUCTS DENMARK APS
 Midtermølen 1, 2. tv.
 2100 Copenhagen, Denmark
 Tel: +34 934 674 999

NETHERLANDS
PELI PRODUCTS NETHERLANDS B.V.
 Basisweg, 10
 1043AP Amsterdam,
 The Netherlands
 Tel +34 934 674 999

ITALY
PELI PRODUCTS ITALY S.R.L.
 Viale Monte Nero, 84
 20135 Milano, Italy
 Tel +34 934 674 999

POLAND
PELI PRODUCTS POLAND SP. Z O.O.
 ul. Stary Rynek 38-39
 61-772 Poznan, Poland
 Tel +34 934 674 999

UAE
PELICAN PRODUCTS FZE
 JAFZA One Building A
 office 1511/1512
 Jebel Ali Free Zone gate 5
 P.O.Box 261008
 Dubai – United Arab Emirates
 Tel +971 4 8876550

INDIA
PELICAN PRODUCTS AND SERVICES INDIA PVT. LTD
 Level "4", Augusta Point,
 Sector-53,
 Golf Course Road,
 Gurgaon 122002 Haryana, India
 Tel +91 124 4354148

U.S.A.

U.S.A. & GLOBAL HEADQUARTERS
 23215 Early Avenue
 Torrance, CA 90505 USA
 Tel 310.326.4700
 800.473.5422 (Outside CA)

* We also have offices in Canada, Japan, China, Australia and South Korea

ROTO MOULDED CASES - PELI 1 YEAR LIMITED GUARANTEE

Peli Products, S.L.U. ("Peli") guarantees its rotationally moulded containers will be free of defects in materials and workmanship for a period of one year from the date of purchase. This warranty does not cover any associated hardware including closure hardware, retractable handles, wheels, and fasteners, which Peli warrants against defects in materials and workmanship for a period of 90 days from the date of purchase. This warranty applies only to the original purchaser and is not transferable. To the extent permitted by law, Peli's liability is limited to the case and not its contents. All warranty claims of any nature are barred if the container has been altered, damaged or in any way physically changed, or subjected to abuse, misuse, negligence or accident.

For complete warranty details, see www.peli.com/guarantee

Distributed by:

Follow us on: PELInsights subscribe now!



©2022 Peli Products, S.L.U. All trademarks are registered and/or unregistered trademarks of Peli Products, S.L.U., its parent, subsidiaries and/or affiliates. All details included in this catalogue are correct when printed but for most updated information please visit www.peli.com and www.pelicatalogue.com.
 Part No. 0030-001-900E OCT. 22

PELInsights



Check out our latest posts on Peli Cases, get to know our Pro Users and take part in our different programs.

This and more on the brand new PELI blog!



Watch our video on Peli-Hardigg engineered containers!

